

**Success-Ready Students**  
Network

**Let's Build Real World Learning Together**

*March 27, 2025*

**[SRSN Website](#)**

# Purpose



*Participants will explore how superintendents collaborate with community and regional partners to ensure every student has access to essential opportunities for college, career, and workplace readiness. Attendees will leave equipped with actionable strategies to expand student opportunities within their districts through effective regional network support.*



# Presenters & Resources



Mr. John French

[jfrench@lewis.k12.mo.us](mailto:jfrench@lewis.k12.mo.us)

[www.lewis.k12.mo.us](http://www.lewis.k12.mo.us)

[Lewis S-RSCIS Dashboard](#)

Dr. Mike Fulton, SRSN Facilitator

[mikefulton@srsnmo.org](mailto:mikefulton@srsnmo.org)

[www.srsnmo.org](http://www.srsnmo.org)

Dr. Jennifer Kephart

[jennifer.kephart@sdowmo.org](mailto:jennifer.kephart@sdowmo.org)

[www.washington.k12.mo.us](http://www.washington.k12.mo.us)

Washington S-RSCIS Dashboard

Dr. David Schmitz

[dschmitz@lebanon.k12.mo.us](mailto:dschmitz@lebanon.k12.mo.us)

[www.lebanonr3.org](http://www.lebanonr3.org)

[Lebanon S-RSCIS Dashboard](#)

Dr. Charles Pearson, SRSN Facilitator

[charlespearson@srsnmo.org](mailto:charlespearson@srsnmo.org)

[www.srsnmo.org](http://www.srsnmo.org)

Dr. Sandy Steggall

[sandy.steggall@ccr3.k12.mo.us](mailto:sandy.steggall@ccr3.k12.mo.us)

[www.ccr3.k12.mo.us](http://www.ccr3.k12.mo.us)

Dr. Jeremy Tucker

[jeremy.Tucker@lps53.org](mailto:jeremy.Tucker@lps53.org)

[www.lps53.org](http://www.lps53.org)

[Liberty S-RSCIS Dashboard](#)



## ***INTRODUCTIONS***

Please turn to a shoulder partner and share your Name,  
District and Position. Answer the following:  
*What do you hope to gain from this session?*

# Missouri Framework: Competency-Based Learning



The SRSN engages stakeholders in using a CBL mindset to design a system that **supports students in developing the knowledge, skills and dispositions they need to be high school, college, career and workplace ready.**

*GIVE ME A LEVER LONG ENOUGH...AND  
SINGLE-HANDED I CAN MOVE THE WORLD  
Peter Senge, The Fifth Discipline*



# Personalized Competency-Based Learning Mindset

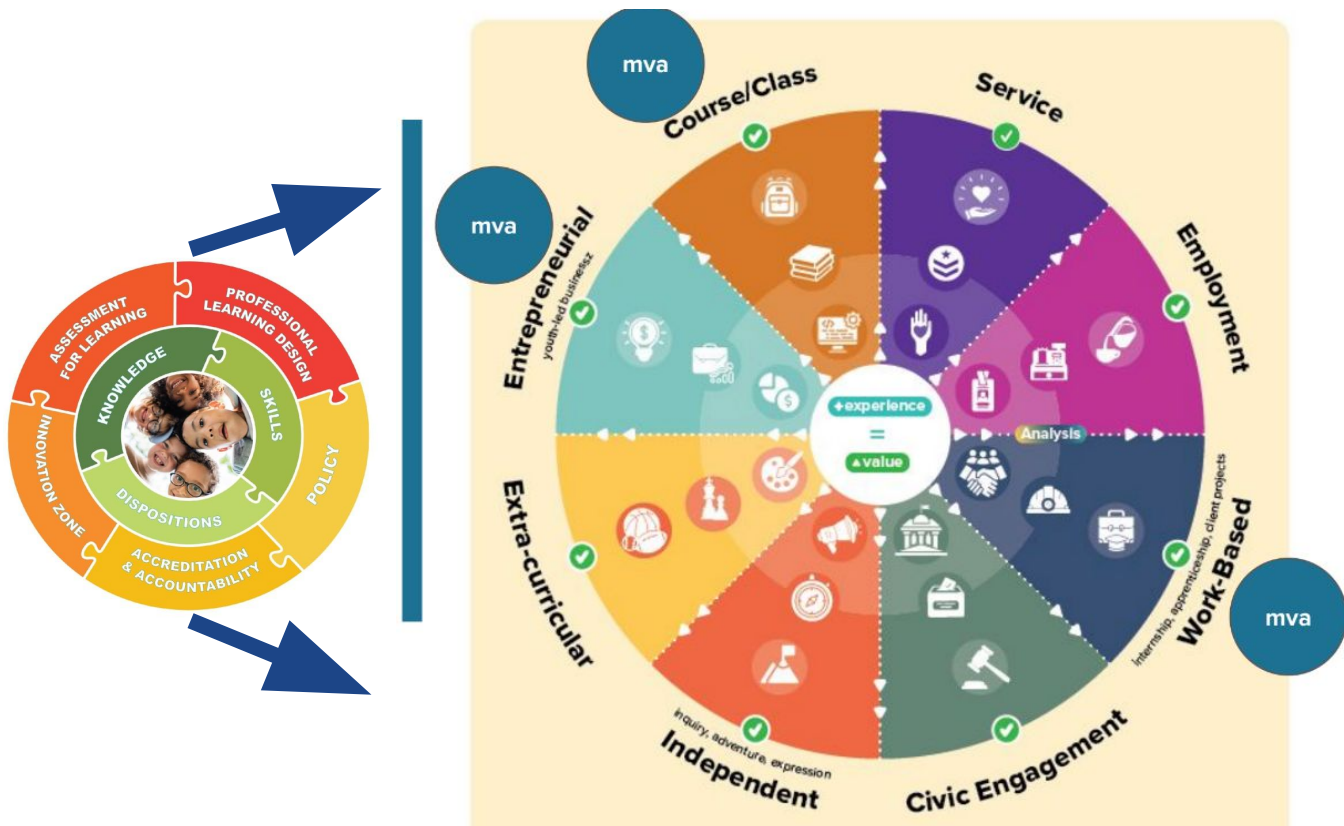


1. **Students are empowered daily** to make important decisions about their learning experiences, how they will create and apply knowledge, and how they will demonstrate their learning.
2. **Assessment is a meaningful,** positive, and empowering learning experience for students that yields timely, relevant, and actionable evidence.
3. **Students receive timely, differentiated support** based on their individual learning needs.
4. **Students progress based on evidence of mastery,** not seat time.
5. **Students learn actively using different pathways and varied pacing.**
6. **Strategies to ensure equity for all students are embedded** in the culture, structure, and pedagogy of schools and education systems.
7. **Rigorous, common expectations for learning** (knowledge, skills, and dispositions) are explicit, transparent, measurable, and transferable.
8. **Students engage in Real World Learning experiences** that support high school, college, career and workplace readiness.\*

**A competency-based school should implement all seven elements** of the definition. Strong implementation also requires policies, pedagogy, structures, and culture that support every student.

**\* Real World Learning as an eighth element is a Missouri addition** to the definition of CBL.

# Real World Learning



We need to expand from course/class to an entire learning ecosystem.

MVAs



# Initiating Regional Collaboration



How did your district begin forming partnerships with community and regional stakeholders? What were your first steps and key considerations?



# Building A Regional Ecosystem



What strategies have you found most effective in developing a regional ecosystem that supports real-world learning for students?

# Success Stories and Impact



Can you share a concrete example of how a regional partnership or initiative directly improved student engagement or readiness for college, career, or the workplace?

In what ways do you ensure that all students, regardless of background, benefit equally from these regional opportunities?

# Overcoming Challenges



What are some common challenges you've encountered when establishing and sustaining these partnerships, and how have you addressed them?

# Measuring Success



How do you assess the impact of regional initiatives on student outcomes? What metrics or feedback mechanisms are most useful for you?

# Engaging Local Partners

Proud Member of



What roles do local businesses, higher education institutions, and community organizations play in your regional network, and how do you foster their ongoing involvement?

# Sustaining Momentum



How do you maintain long-term commitment and continuous improvement in these collaborations, ensuring that the network evolves with changing community needs?

# Resource Allocation and Support



What resources, be they financial, human, or informational, have been critical in supporting your district's regional efforts and how do you secure them?



# Advice for Other Districts



What key pieces of advice or actionable strategies would you offer to other superintendents looking to expand student opportunities through regional networks?



**Q and A**

# Success-Ready Students Network



Success-Ready Students  
Network

TRANSLATE ▾



S-RS CONTINUOUS IMPROVEMENT SYSTEM ▾

FRAMEWORK

INNOVATION ZONES ▾

MORE ▾

The SRSN supports Missouri public school stakeholders in using a competency-based mind-set to personalize learning in ways that ensure every student has the knowledge, skills and dispositions they need to be high school, college, career and workplace ready.



[SRSN Website](#)